



2050 Vision Park, Greenway, and Natural Systems

Lil Leatham, Dakota County Principal Planner
Niki Geisler, Dakota County Parks Director
Bruce Chamberlain, Lead Consultant, Tlal-li
Physical Development Division

1

Overview



1. Findings
2. 2050 Vision Framework
3. Park, Greenway, and Natural Systems
4. Implementation
5. Requested Action
6. Questions/Discussion

Process

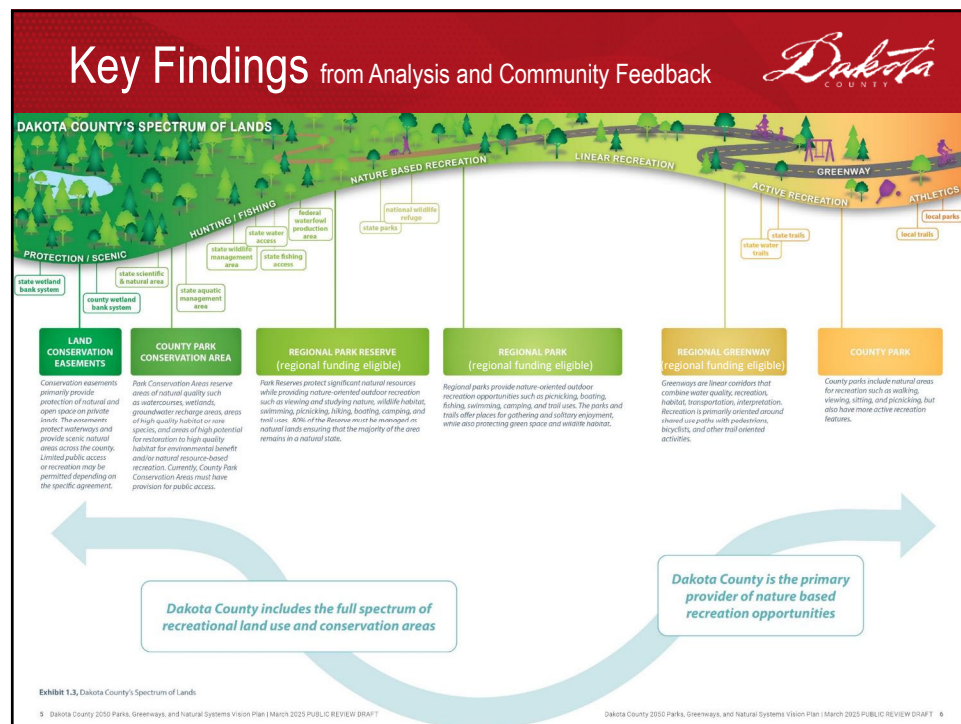
Spring – Fall 2024:
Research, Community Engagement

Fall 2024-Winter 2025:
Vision Framework and Develop Draft Plan

Spring 2025: Public Review Draft Plan, Community Engagement

Spring - Summer 2025:
Final Plan and Approvals

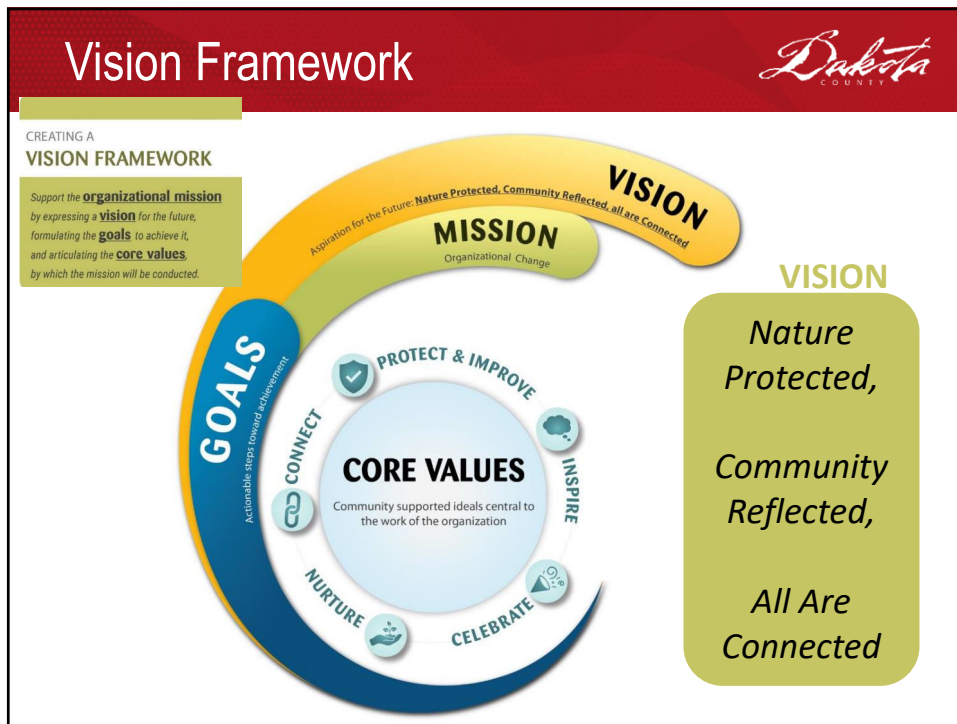
2



3



4



5



6

Vision Framework



GOALS

Goal 1
Nurture the reciprocal relationship between people and nature.

Goal 2
Cultivate belonging by engaging and serving the community, with an emphasis on those who are under-represented in the outdoors.

Goal 3
Provide safe and positive core services, amenities, and experiences.

Goal 4
Create dynamic spaces with unique and memorable experiences.

Goal 5
Expand environmental stewardship through outdoor programs, learning, and volunteerism.

Goal 6
Offer opportunities to improve physical, mental, and spiritual health.

Goal 7
Strengthen partnerships with Tribal Nations and Indigenous communities for the protection of lands and traditions.

Goal 8
Locate new park units close to people or to protect natural areas and recreational assets.

Goal 9
Lead and support on ecological stewardship and climate resilience.

Goal 10
Elevate cultural richness through arts, historic preservation, interpretation, and storytelling within the park system.

Goal 11
Seek values-based and mission-driven partnerships.

Goal 12
Care for the system through sustainable and innovative funding.

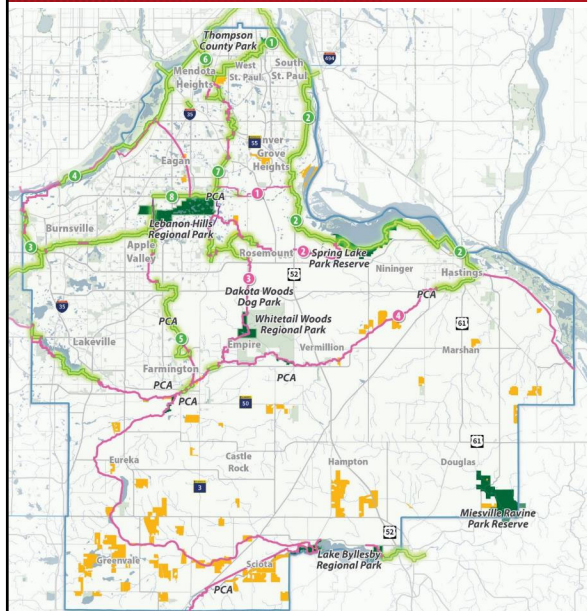
Goal 13
Invest in a thriving parks workforce that represents the communities served.

Goal 14
Support local and sustainable economic development.

Goal 15
Protect, improve, and manage the natural resources of Dakota County.

7

Current System



LEGEND

▲ Reserves, Regional Parks, and County Park

PCA Park Conservation Areas (PCA)

Conservation Easements

Non-County Public Lands

Non-County Trails

Existing/In Development County Greenways

1 River to River

2 Mississippi River

3 Lake Marion

4 Minnesota River

5 North Creek

6 Big Rivers Regional Trail

7 Lebanon Hills

2030 Greenway Vision

1 Veterans Memorial Greenway

2 Rosemount Greenway

3 Vermillion Highlands Greenway

4 Vermillion River Greenway

Greenway Ring Route

8

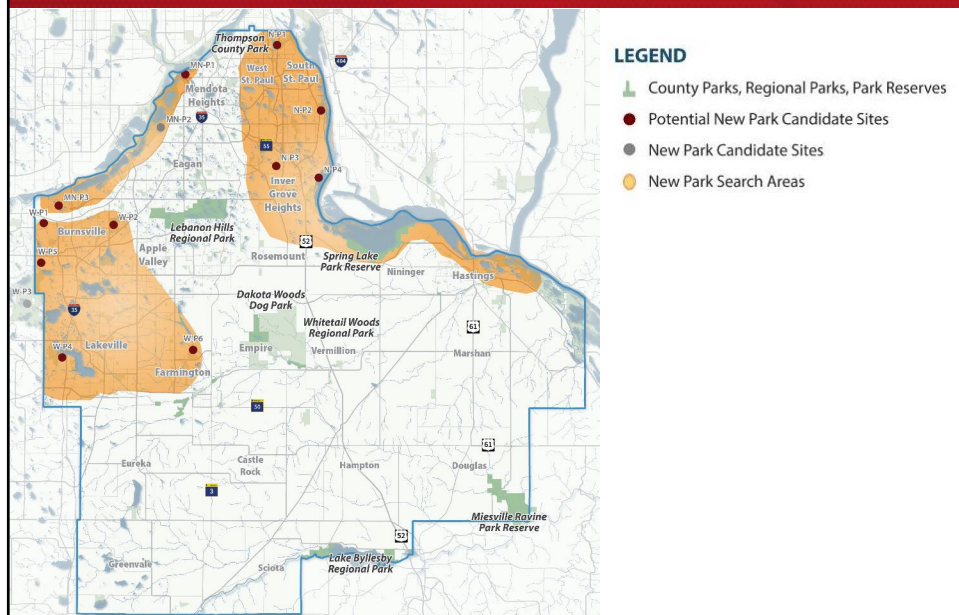
Park, Greenway, and Natural Systems *Dakota* COUNTY

Chapter 3 offers guidance on system-wide land conservation and park and greenway development

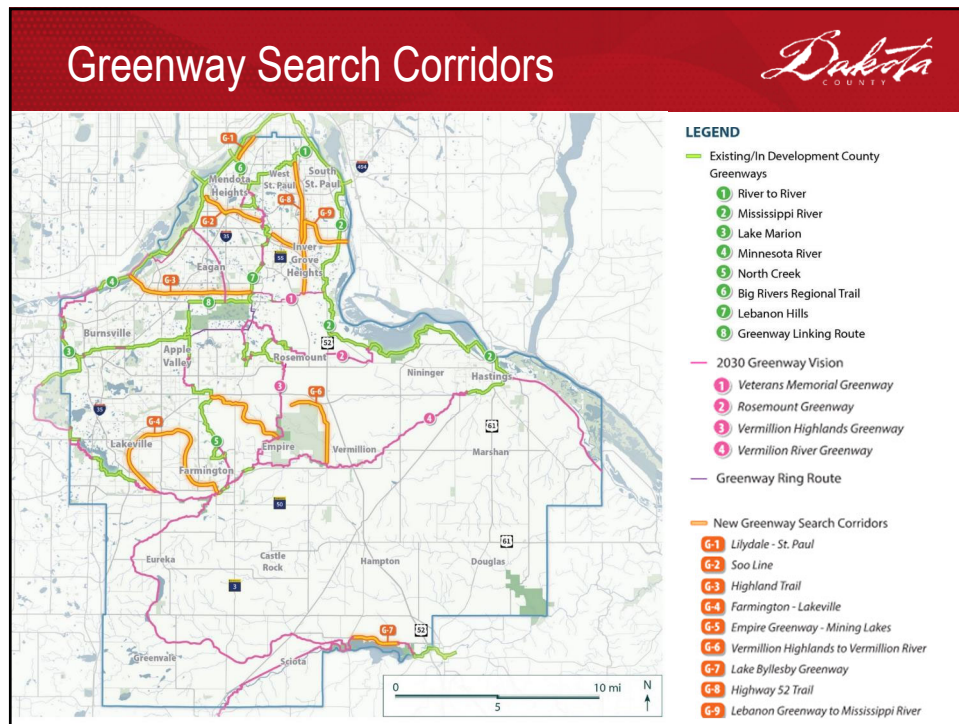
- Park Classification
- Core Services and Amenities
- Signature Facilities
- Accessibility
- Conservation Focus Areas
- Park Search Areas
 - Search areas with known candidate sites identified
- Greenway Search Areas
 - Expansion of Greenway Collaborative
 - Existing: trails, trailheads, natural resource restoration
 - New: nature base recreation, community trail connections

9

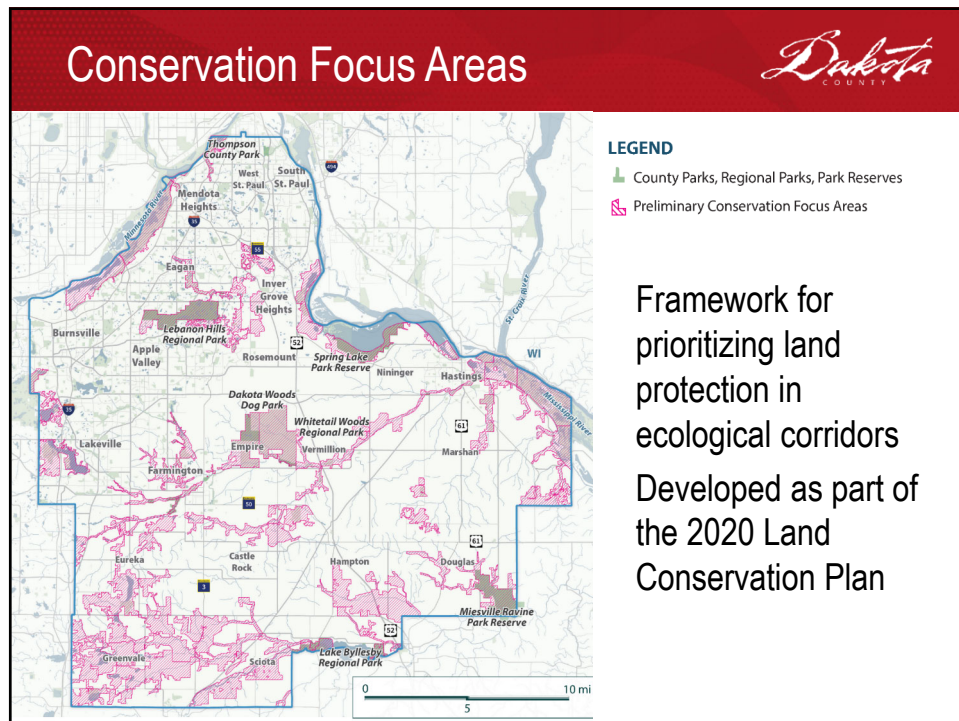
Park Search Areas *Dakota* COUNTY



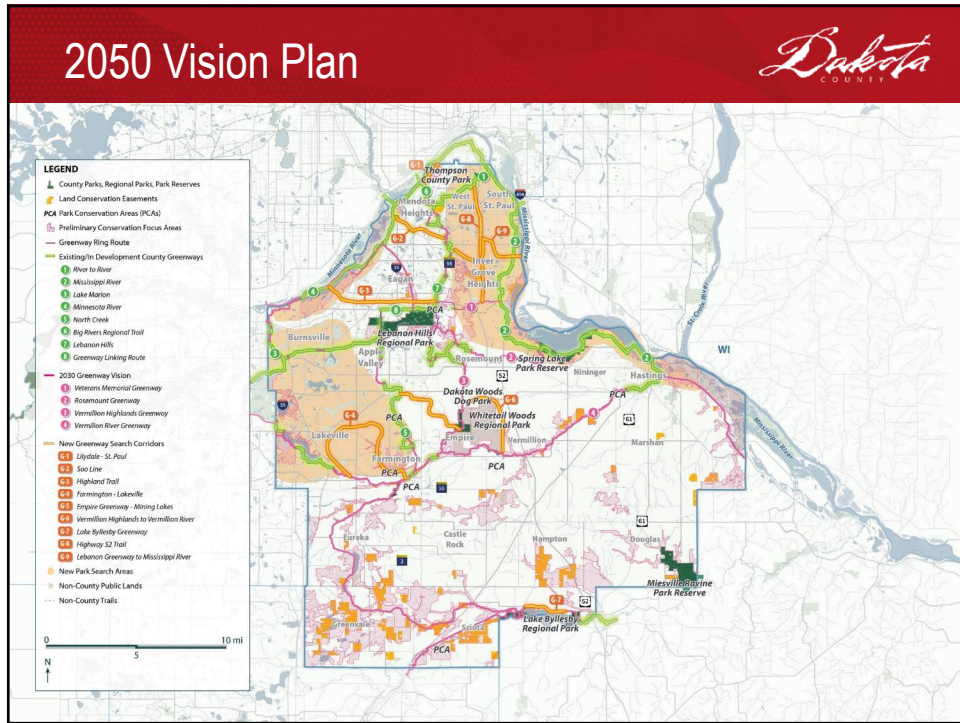
10



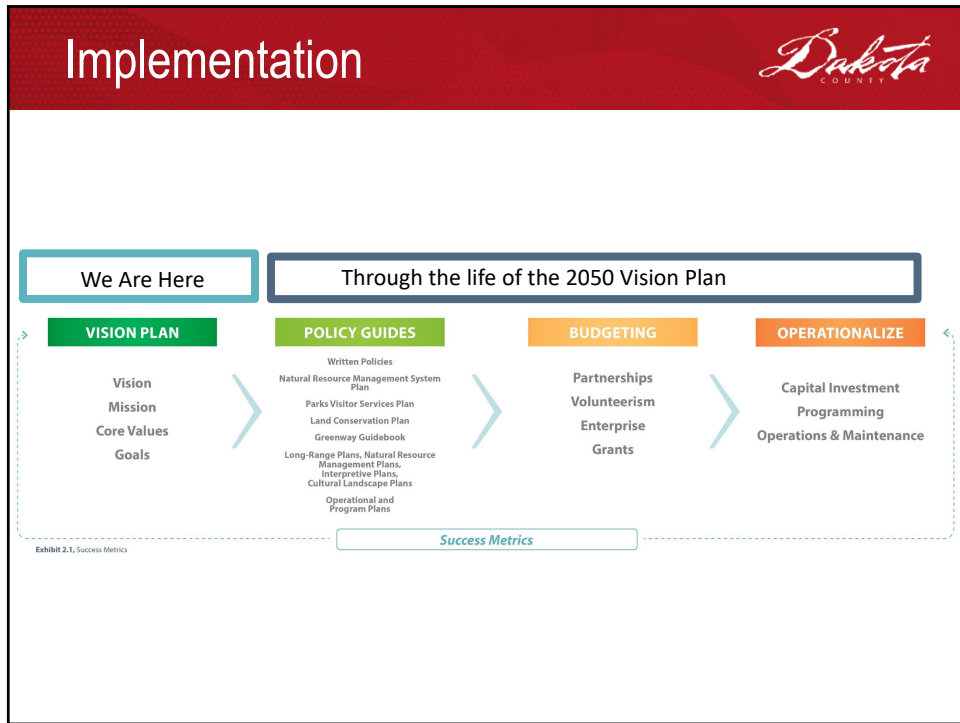
11



12



13



14

Implementation – Sustainable Funding



Tools:

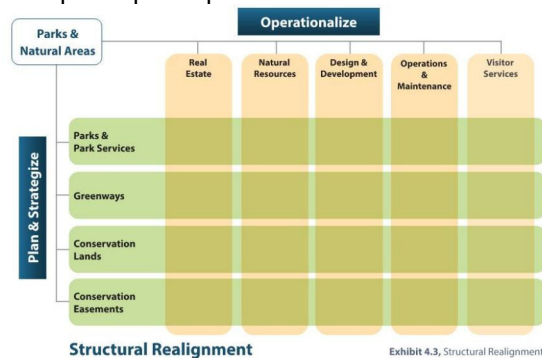
- Regional funding
- County levy
- Grant programs
- Bond measures
- Philanthropic donations
- User fees
- Partnerships
- Revenue generating activities
- Creation of a Special Park District

15

Implementation – Operations & Staffing



- Develop a Capital Replacement Program
- Develop a strategy to add operations staff along with system growth
- Develop staffing model with less dependence on seasonal staff for year-round operations
- Evaluate benefits of organizational structural changes that would improve park operations



16

Implementation - Update Operational Plans *Dakota* COUNTY

- Natural Resource Management System Plan
- Land Conservation Plan
- Visitor Services Plan
- Greenway Guidebook



17

Implementation – Parks and Greenways *Dakota* COUNTY

- Continue to implement the 2030 greenway vision
- Incorporate new search areas into Met Council Regional Parks Policy Plan
- Develop long-range plans for park and greenway search areas
- Prepare land acquisition plan/partnership plan for new parks
- Develop long-range and natural resource management plans for County Park Conservation Area
- Prepare phase two ADA transition plan (park outdoor facilities)

18

Implementation – Indigenous Partnership

- Establish consultation protocols and collaborative processes
- Conduct Traditional Cultural Places surveys
- Develop plans for Indigenous sites
- Apply Traditional Ecological Knowledge (TEK) that stewards healthy water and land

19

Requested Action



Recommendation to the Physical Development Committee of the Whole to release the Draft Park, Greenway, and Natural Systems 2050 Vision Plan for public review.

20

Questions and Discussion



Next Steps

- April 15, PDC – Public Review Draft
- April 22- May 20: Public review
- June, Planning Commission – Final Plan
- July, PDC – Final Plan

Thank you!